

# DRESDEN TEXTILES LTD.

*(100% Export Oriented LEED GOLD Certified Green knit composite Industry)*



**Corporate Office:** House # 405, Lane # 6, DOHS Baridhara, Dhaka-1206, Bangladesh.

**Factory:** Guzium (Bogar Bazar), AmiraBari, Trishal, Mymensingh-2220, Bangladesh.

## Company at A Glance

Company Name : **DRESDEN TEXTILES LTD.**  
Type of Business : Manufacturer and Exporter of all types of Knit garments.  
Legal Status : Private Limited Company  
Year of Establishment : 2007  
Floor Area : 375,000 SFT (34839 SQM)  
Turn Over : USD \$85.00 Million/Year  
Facilities : Knitting, Dyeing, Printing, Cutting, Sewing, Packing.  
Capacity : Knitting : 500.00 Metric Ton/Month,  
Dyeing : 1200 Metric Ton/Month,  
Printing : 2.10 Million Pcs/Month,  
Sewing : 3.00 Million Pcs/Month.  
Sewing Line : 60 Line X 25 Machine  
Manpower : 4000

### Certifications

USGBC-LEED GOLD
BSCI
ACCORD/RSC
OEKO-TEX (APENDIX-VI CLASS-I)
GOTS
OCS
BCI
SEDEX
WRAP
RCS
GRS
HIGG

Members : BGMEA, EPB.

Financing Partner : AGRANI BANK LTD.  
ISLAMI BANK BANGLADESH LTD.

We practice TQM (Total Quality Management) and 5-S.



5S is a process made popular and used by Toyota which is based on five principles starting with "S". 5S is a foundation for both Kaizen and the Toyota Production System.

---

- 1 SEIRI** (SORT) | SEPARATE NECESSARY ITEMS FROM UNNECESSARY. 
- 2 SEITON** (STRAIGHTEN) | MAKE A PLACE FOR EVERYTHING, AND EVERYTHING MUST HAVE A PROPER PLACE. 
- 3 SEISO** (SHINE) | CLEAN UP AS YOU WORK AND MAINTAIN A CLEAN ENVIRONMENT. 
- 4 SEIKETSU** (STANDARDIZE) | DEVELOP RULES TO REPEAT POSITIVE RESULTS. 
- 5 SHITSUKE** (SUSTAIN) | MAINTAIN CONSISTENCY AND STRIVE FOR CONTINUED IMPROVEMENT. 

Also the company office is situated at factory building for which continuous supervision & immediate decisions of the management could easily be given for getting maximum quality and production.

Dresden Textiles Ltd. is a member of BGMEA (Bangladesh Garments Manufacturer and Exporters Association), EPB (Export Promotion Bureau of Bangladesh).

We warmly invite you to have business co-operation with us.

## Knitting Unit

This unit is equipped with world famous Mayer & Cie Circular (Germany) & Fukuhara (Japan) Knitting Machine to produce different types / designs of knit fabrics.

The circular knitting machines of different diameters from 30" to 40". Producing Single Jersey/Pique/Locest Fabrics of weight 135 GSM to 300 GSM (finished). Moreover Lycra (S/J and Rib) Fabrics of weight 110 GSM to 300 GSM (finished), Semi Jacquard Fabrics, Strip Fabrics, Mélange Fabrics, Rib Fabrics, French Terry in different weight.

A group of experienced Knitting operators are engaging under experienced Knitting Engineer having all the sophisticated test equipment. Checking of all gray fabrics is done before dying.

The average monthly production capacity of fabrics is 450 to 500 Tons.

Following fabrics can be produce in our factory:

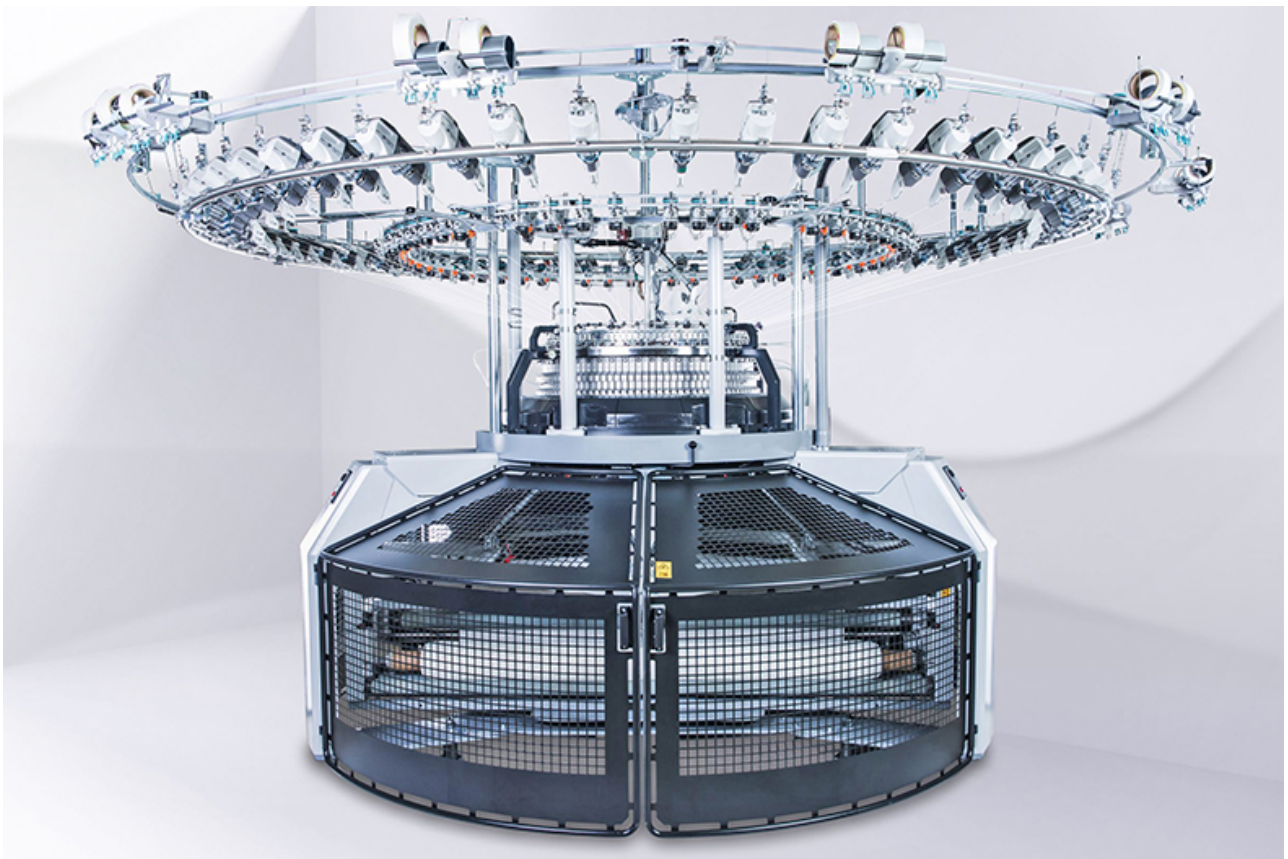
01. 95/5 Cotton/ Elastane Single Jersey from 160 to 250 GSM.

04. 95/5 Cotton/Elastane Frence Terry from 200 to 280 GSM.

05. 95/5 Cotton/Elastane 1X1 Rib from 200 to 280 GSM.

06. Can do S/J, Pique, all kind of Rib, Semi Jacquard, French Terry, Terry Fleece, Thermal, Waffle, Y/D Stripe fabrics with 100% Cotton yarn, 100% Viscose,50% Poly 50% Viscose, 100% polyester with Lycra/Elastane.

## **Mayer & Cie Circular Knitting Machine:**

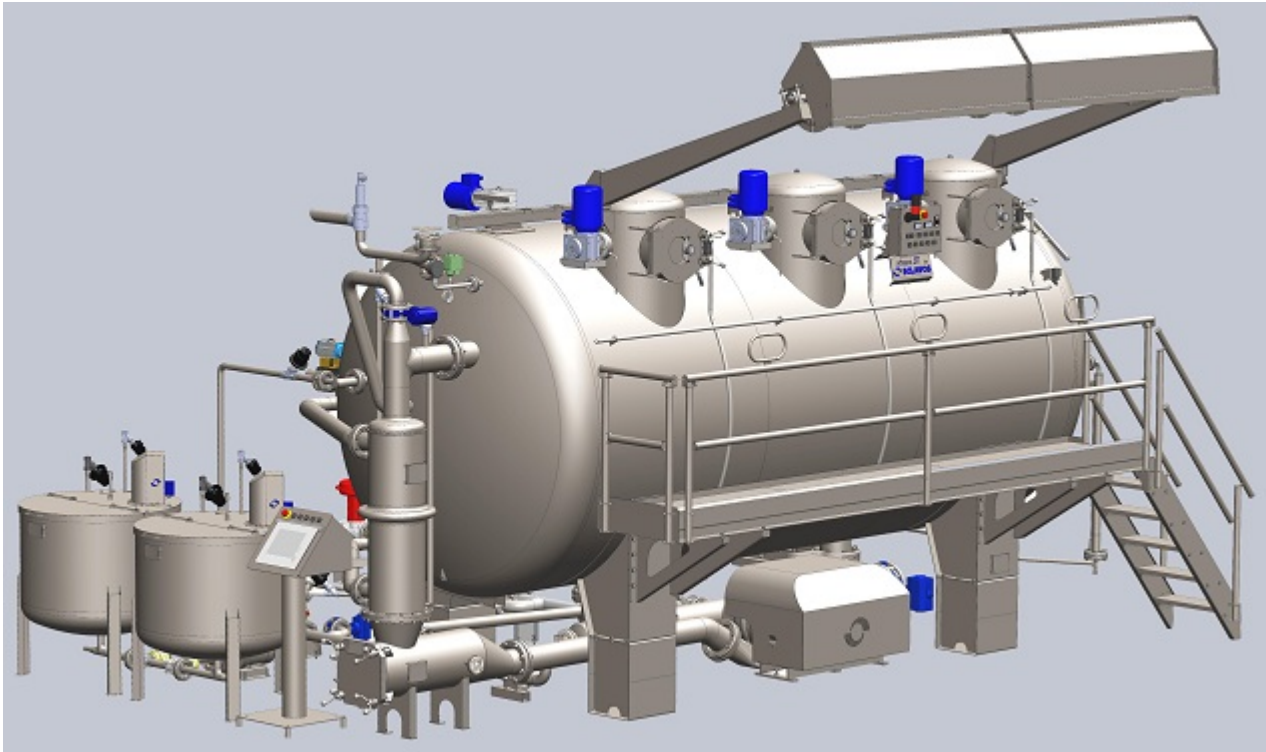


## Dyeing Unit

We are equipped with high quality Fabric dyeing & finishing Machines with fully computerized color kitchen and auto dozing system.

### Fabric Dyeing Machineries:

SL NO.	Brand	Machine Capacity	Unit	Origin
1	Sclavos Athena 4	1500kgs	02 Unit	Greece
2	Sclavos Athena 4	1250kgs	02 Unit	Greece
3	Sclavos Athena 4	1000kgs	04 Unit	Greece
4	Sclavos Athena 4	750kgs	04 Unit	Greece
5	Sclavos Athena 4	500kgs	04 Unit	Greece
6	Sclavos Athena 4	250kgs	04 Unit	Greece
7	Sclavos Athena 4	150kgs	02 Unit	Greece
8	Sclavos Athena 4	50kgs	03 Unit	Greece
9	Sclavos Athena 4	30kgs	03 Unit	Greece
10	Sclavos Athena 4	20kgs	04 Unit	Greece
		16120 Kgs	32 unit	



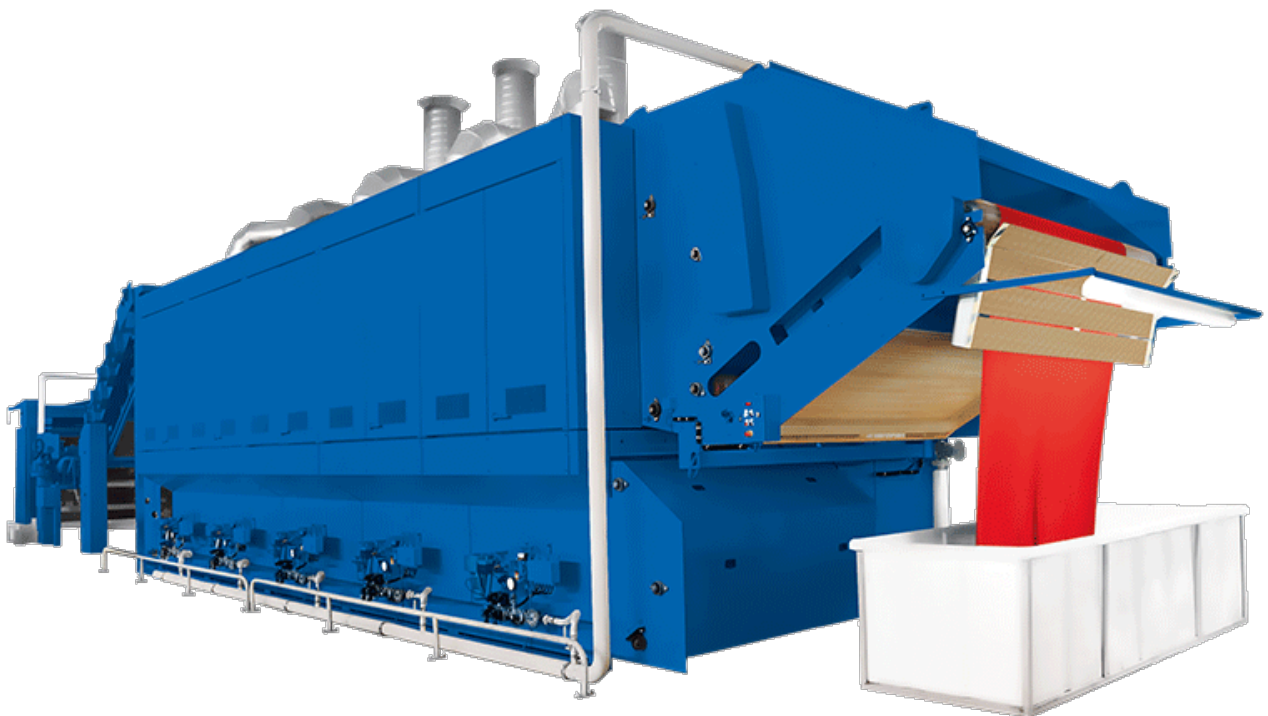
**✚ Fabric Finishing Machineries:**

SL NO.	Machine	Brand	unit	Origin
1	Stenter	Bruckner	2	Germany
2	Stanter	Monoforts	1	Germany
3	Dryer	Santex	1	Switzerland
4	Squeezer	Corino	1	Italy
5	Compactor	Lafer	2	Italy
6	Compactor	Sintec	1	Italy
7	Compactor	TubeTex	1	USA
8	Slitting	Bianco	2	Italy
9	Sliting	Corino	1	Italy

**Bruckner Stenter**



**Santex Dryer**





## Lafer Compactor



## Bianco Slitting



**✚ Color Kitchen & Auto Dispensing System:**

- ❖ Brand- Data Color
- ❖ Origin- USA




**✚ Lab Machineries:**

M/C NAME	BRAND	MODLE	USE AREA	QTY
Spectro Photomitre	Datacolor		Wet Lab	1
Auto Dispenser	Datacolor		Wet Lab	1
Ahiba Dyeing M/C	Datacolor		Wet Lab	4
Fastness Tester/Rota Wash	ATAC		QC Lab	1
Motorized Crock Miter	ATAC		QC Lab	1
Incubator	ATAC		QC Lab	1
Perspiration meter	ATAC		QC Lab	1
ICI Pilling & Snagging Tester	ATAC		QC Lab	1
Washcator	Electrolux		QC Lab	2
Tumble Dyer			QC Lab	2
Light Fastness Tester	SDL ATLAS	CI300+	QC Lab	1
Tru Bust4 (Busting Tester)	James heal	1440	QC Lab	1

 **Utilities:**

SL NO.	Machine	Capacity	Brand	unit	Origin
1	Gas Generator	1500KW	MWM	1	Germany
2	Gas Generator	1125 KW	MWM	1	Germany
3	Boiler	12000 Kg/h	BOSCH	1	Germany
4	Boiler	6000 Kg/h	BOSCH	1	Germany
5	Air Compressor	70 BAR	GARDNER DANVER	4	Germany

**BIOLOGICAL E-FLUENT TREATMENT PLANT (ETP):**

-  Brand- Panta rei biological treatment plant.
-  Capacity- 2300 m<sup>3</sup>/day.
-  Origin- Italy.

## **Garments Unit:**

This unit is equipped with modern machinery of brand: Pegasus, Brother, Kansai Special, IDEA & K.M. The selection of machines is done such a way to cover most of the sewing facilities for the Knit Garments.

The finishing of garments is done by full Steam Irons pressed on Vacuum Ironing Tables. All the garments are passing through thread sucking machine. Thread trimmings are done by automatic machines. All complete garments are 100% checked by **metal detector** machine.

1st inspection is done during sewing in production floor, then after completion of sewing, finishing ironing works final inspection done. We do 100% inspection before export.

The efficient workers, supervisors and floor in-charge are working in this unit under an experienced Production manager and General Manager.

The **sample making section** is headed by an experienced in charge capable to understand all kinds of styles, sketches, different types of stitching and fabrics, pattern making also done here. The machine operators of this section can operate all kinds of sewing machines. All development samples for different seasons, fitting samples, photo samples are produced in this section.

Average monthly production of garments. (For Basic Style) 2.87 Million pieces to 3.25 Million pieces.

Average monthly production of garments (For Critical Style) 1.79 Million pieces to 1.93 Million pieces.

## **Machinery List:**

### **Cutting Section:**

- ✚ Cad System.
- ✚ Morgan Software
- ✚ Plotter Leonardo (Made by Italy)
- ✚ Morgan Automatic Spreading Machine
- ✚ Morgan Automatic Cutter Machine

### ❖ Sewing Section:

✚ 1 Needle Straight Lock stitched (Plain Machine).	790 Set
▪ Brother Band Model S-6200DD-403/G10WD	
✚ 2 Needle, 4-thread Overlook machine	500 Set
▪ Pegasus Model: M852-13H-2X4	
✚ 3 Needle, 5-thread cylinder bed Flat lock machine	310 Set
▪ Pegasus Model: W1662P-01GX356BS	
✚ 3 Needle, 5-thread flatbed interlock machine	30 Set
▪ Pegasus Model: CW562P-01GBX356, CW562P-02GBX356	
✚ 3 Needle, 5-thread small cylinder bed interlock machine	15 Set
▪ Pegasus Model: W264P-01GBX356/Y1625	

### Other Machine

✚ 1 Needle, Electronic Bartek machine	6 Set
▪ Brother Model: KE-430F-02-S	
✚ 1 Needle, lock button stitch machine	15 Set
▪ Brother Model: BE-438F-03-S	
✚ 1 Needle, lock button hole machine	15 Set
▪ Brother Model: HE-800A-3	
✚ High speed Flat bed double Chain stitch. (Waist Band Machine)	9 Set
▪ Kansai special model: DFB-1411P-XP	
✚ 2 Needle, Lock stitched machine	6 Set
▪ Brother Model: T-8420C-003-N64D	
✚ 2 Needle, chain stitched machine	9 Set
▪ Kansai special model: LX-5802M	
✚ Rib cutting machine Model: Dino Band LU-922	12 Set
✚ Snap fastening machine Model: UZ7EN	9 Set
✚ Thread Winding machine Model: UZ-20S	3 Set
✚ G.TOTAL: Sewing Section Machine	1729 Set

### Finishing/Packing Section:

✚ Flat vacuum Iron Table size 80X120CM - Uzu Model UZ-8F
✚ Silver Star Iron with Steam Hose Pipe
✚ Steam Boiler with Gas Burner
✚ Thread Sucking machine-Uzu-12N
✚ metal detector machine

Moreover, **Dresden Textiles Ltd** has the following facilities for smooth operation:

- ✚ Installed Electric BUS - BAR Trunking System.
- ✚ Installed Fire - Extinguisher
- ✚ Own Stand by Generator to run full factory (Brand: MWM from Germany 2.5 Megawatt).
- ✚ Own Power Substation (REB).
- ✚ Screw Compressors of Brand Gardner Denver from Germany
- ✚ Fire Fighting Equipment's including Fair Hose Pipe. Fire Extinguishers, Smoke Detectors, Emergency Separate Staircase 4(Four), etc.
  - Sufficient volume of water is reserved at Under Ground.
- ✚ Quality Electrical Cable with appropriate Circuit Breakers used in MDBs & SDBs at each floor as per ACCORD specification.
  - Sufficient Tube Lights are provided in all working areas.
  - Sufficient Ventilation is provided by installing Ceiling Fans, Exhaust Fans.
  - Factory Premises are always kept neat & clean.
  - Floors are fitted with Glazed Tiles so that it remains very clean.
  - We do not have any Child Labor.
  - Engaged Doctor for take care of Staff and Worker's health.
  - Have Child care facility.
  - Hygienic Toilet complexes at each floor separately for male & female workers.
- ✚ 4 stairs & 2Lift
- ✚ Canting, Dining & Shop Facilities.
- ✚ Each Floor Drinking Water Facilities.
- ✚ Payer Room (male & female).

## **Contact Information:**

**Contact Person:**

**Mohammed Anarul Hoque**  
**Chairman**  
+88 01713-211256  
chairman@dresdentextiles.com

**Gazi Mahtab Uddin**  
**Managing Director**  
+88 01715-055537  
md@dresdentextiles.com

**Md. Anisur Rahman Tushar**  
**Manager**  
**Marketing & Merchandising**  
+88 01818-039026  
tushar@dresdentextiles.com